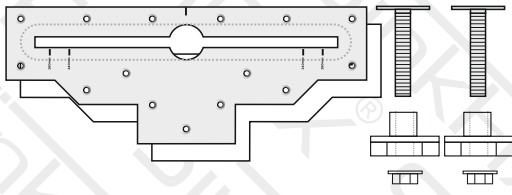




### Contents of Box:

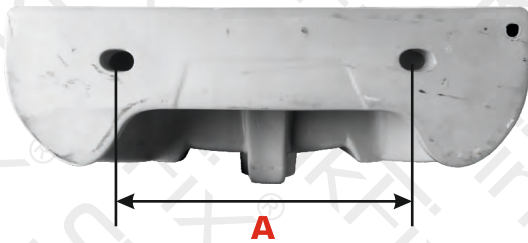


### Recommended Tools for installation: Important Notes:

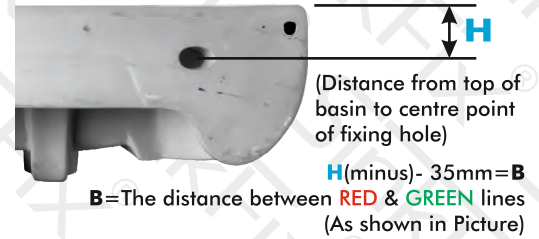
- Tape Measure
- Pencil
- Power Drill
- Suitable size masonry drill bit
- Suitable Screwdriver
- Spirit Level
- 15mm Spanner

- **Ensure** there are no services in the area before drilling.
- **Drill holes accurately** to ensure the countersunk screws sit flush to the surface of the plate.
- **Fixing to a stud is recommended** for plasterboard walls.
- **Do not over-tighten** the flange nuts.
- **Always contact a professional installer** if any doubt on load bearing.

### Preliminary Steps

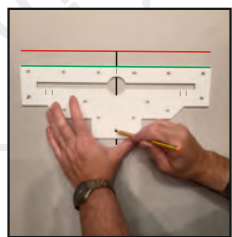
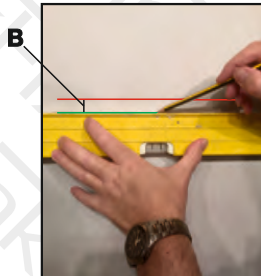
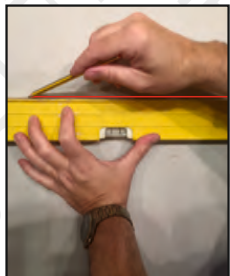


Place the nylon bushes inside the basin fixing holes, do this to ascertain the best position for them. (Due to mouldings of basins, the central point isn't always the best suited position). Note measurement 'A' Measurement 'A', will be the final distance apart for the M10 x 65mm bolts. Now measure 'H'



1. Draw a horizontal line representing the **finished height** of the basin shown in **RED**. (This may be dependant if using a full pedestal and/or where the services are).

Draw another horizontal line (shown in **GREEN**) under the red line at the distance obtained in preliminary steps (Measurement **B**). This represents the top of the SinkFix® plate.



2. Draw a vertical line perpendicular to the horizontal lines which corresponds to the centre of the basin. Align the plate accordingly, then mark the relevant holes that will be used to secure the plate.

3. Drill and plug using suitable plasterboard or solid wall fixings. (depending on your wall).

Multiple fixing points are recommended. If installing on a plasterboard wall try and locate a stud.

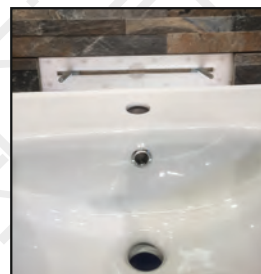
**Fix loosely at this point,**

Insert the bolts and slide to their relevant positions 'A' (Obtained in the preliminary steps). Finally tighten all screws.



The plate can be installed on a pre-tiled surface, however the wash basin will stand proud of the wall by 3.8mm. This gap can be 'siliconed'.

5. Place the IXPE sound dampening foam sheet over the plate. This will help protect the back of the basin and substantially reduce sound transference.



6. Offer up the basin to the protruding bolts and insert the nylon bushes through the wash basin holes (shown opposite). Screw on the flange nuts. Adjust the bushings to obtain the correct level then holding the 'wings', tighten the flange nuts using a 15mm spanner.

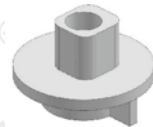
7. Insert the 'Wing' nylon bushings and rotate to achieve perfect horizontal level for basin, hold the wing while tightening with a 15mm spanner. When changing the basin in the future. Just remove the old basin, loosen the screws, adjust the bolts to the corresponding distance of



### Tip:

The nylon eccentric bushings supplied are designed to adjust the height and or level of the basin ensuring easy adjustment.

Setting 1-3 will gradually increase the height. Place a spirit level on the basin and turn the bushings as required to obtain a perfect level. Hold in position when tightening up the flange nuts using a 15mm spanner. Do not over-tighten.



the new basin, re-tighten and re-fit